



# INFORMATION SHEET EXCHANGE STUDENTS

## UNIVERSITY KEY DATA

### NAME

Universitat Politècnica de  
Catalunya-BarcelonaTECH (UPC)

### ERASMUS ID CODE

E BARCELO03

## FACULTY KEY DATA

### NAME

Barcelona School of Informatics  
(FIB)

### MAIL ADDRESS

Campus Diagonal Nord, B6  
building  
C/Jordi Girona, 1-3  
08034-Barcelona, Spain

## CONTACTS

### VICE-DEAN FOR INTERNATIONAL RELATIONS, MOBILITY COORDINATOR & OLA CONTACT

Anna Rio

### HEAD OF THE ACADEMIC OFFICE, RESPONSIBLE FOR ADMISSIONS

José Manuel Diéguez

### INTERNATIONAL RELATIONS OFFICE (INCOMING & OUTGOING)

Carolina Martín

### BILATERAL AGREEMENTS

Tania Polonio



**Phone:** +34 93 401 07 37

**Email:** [fib.rel.int@upc.edu](mailto:fib.rel.int@upc.edu)

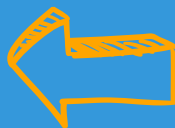


## EXCHANGE PROCEDURES

### NOMINATION PROCEDURE

Partners must nominate here.  
Once students are nominated, we  
inform them on how to apply.

### NOMINATION DEADLINE



**Autumn semester/Full year**

2 May

**Spring semester**

2 November

### APPLICATION DEADLINE

**Autumn semester/Full year**

1 June

**Spring semester**

1 December



## ACADEMIC CALENDAR



### SEMESTER PERIODS (INCLUDING EXAM PERIODS)

#### **Autumn semester**

From the 1st week of September to  
late January.

#### **Spring semester**

From the 2nd week of February to  
late June.

### ORIENTATION WEEK

The Orientation Week activities will  
take place PROGRESSIVELY.

**Autumn semester:** Between the end  
of July and during September.

**Spring semester:** Between the end  
of January and during February.

# ACADEMIC OVERVIEW

## ACADEMIC STRUCTURE

Bachelor = 4 years (240 ECTS)

Master = between 1.5 years (90 ECTS) and 2 years (120 ECTS), depending on the Master.

## CREDIT SYSTEM AND SEMESTER WORKLOAD

20-30 ECTS recommended.

The UPC uses the European Credit Transfer System (ECTS). One ECTS credit point translates into 25-30 hours of work. Regular full-time study is 30 ECTS per semester.



## GRADING SYSTEM

**MH Honors**

(given exceptionally)

9 - 10.0 Excellent

7 - 8.9 Very good

5 - 6.9 Satisfactory

4 - 4.9 Marginal Fail

0 - 3.9 Fail

NP Not examined

From 0 to 10 (Pass  $\geq 5$ )



## COURSE PLANNING



### MASTER COURSES

Master courses are mostly reserved for master students. To choose them as a Bachelor student, around 165-170 credits must have been passed.

### POSSIBILITY OF ATTENDING COURSES FROM DIFFERENT SCHOOLS

Only with school authorization, but they cannot be included in the initial version of the learning agreement. Note: >50% of credits must be enrolled at the FIB.

### BACHELOR/MASTER THESIS DETAILS

Applicants for a final thesis during their stay must defend it at the FIB in the corresponding periods. Bachelor Thesis: 18 ECTS, Master Thesis: 30 ECTS Before their arrival the students must find a supervisor at the FIB.



**COURSE**  
**CATALOGUE**

## LANGUAGE REQUIREMENTS



### LANGUAGE OF INSTRUCTION

GEI: ESP/CAT

GCED: ESP/CAT

GIA: ESP/CAT/ENG

BBi: ENG

MEI: ESP/CAT

MAI: ENG

MIRI: ENG

MDS: ENG

### LANGUAGE REQUIREMENTS

Mobility students must accredit an intermediate level (B1) of Spanish / English, depending on the language of the degree they enroll in.



## OTHER DOCUMENTS

### ONLINE LEARNING AGREEMENT

FIB is connected to the EWP platform, therefore we can validate LAs digitally. However, we will not sign any OLA until the student is officially accepted and registered in our system.

### TRANSCRIPT OF RECORDS

3 weeks after the semester ends. Transcripts can be downloaded online through the mobility platform. There is no possibility of retaking exams

LANGUAGE COURSES  
FOR  
EXCHANGE STUDENTS

## PRACTICAL INFORMATION



### INSURANCE



Applicants must book a private insurance that covers them for these services during their stay:

- hospitalisation
- medical expenses
- civil liability and repatriation

The European Health Insurance Card is not enough.

### VISA



Applicants from EU do not need a visa but need to get the NIE. Students from countries outside of the EU who come to study for longer than 3 months must apply for a student visa.

### ACCOMMODATION



Accommodation is not provided by the school/university. However, this link might be helpful.

### COSTS OF LIVING



International students must foresee spending at least 1200€ a month on living expenses.

## MORE PRACTICAL INFORMATION

[STUDENTS WITH DISABILITIES AND SPECIAL NEEDS](#)

[MORE INFORMATION FOR EXCHANGE STUDENTS](#)

[FIB WEBSITE](#)

*International  
Partnerships*

**205**

Universities

**42**

Countries

**1888**

Satisfied  
students

